

SECTION II

PM9-2320-266-24P

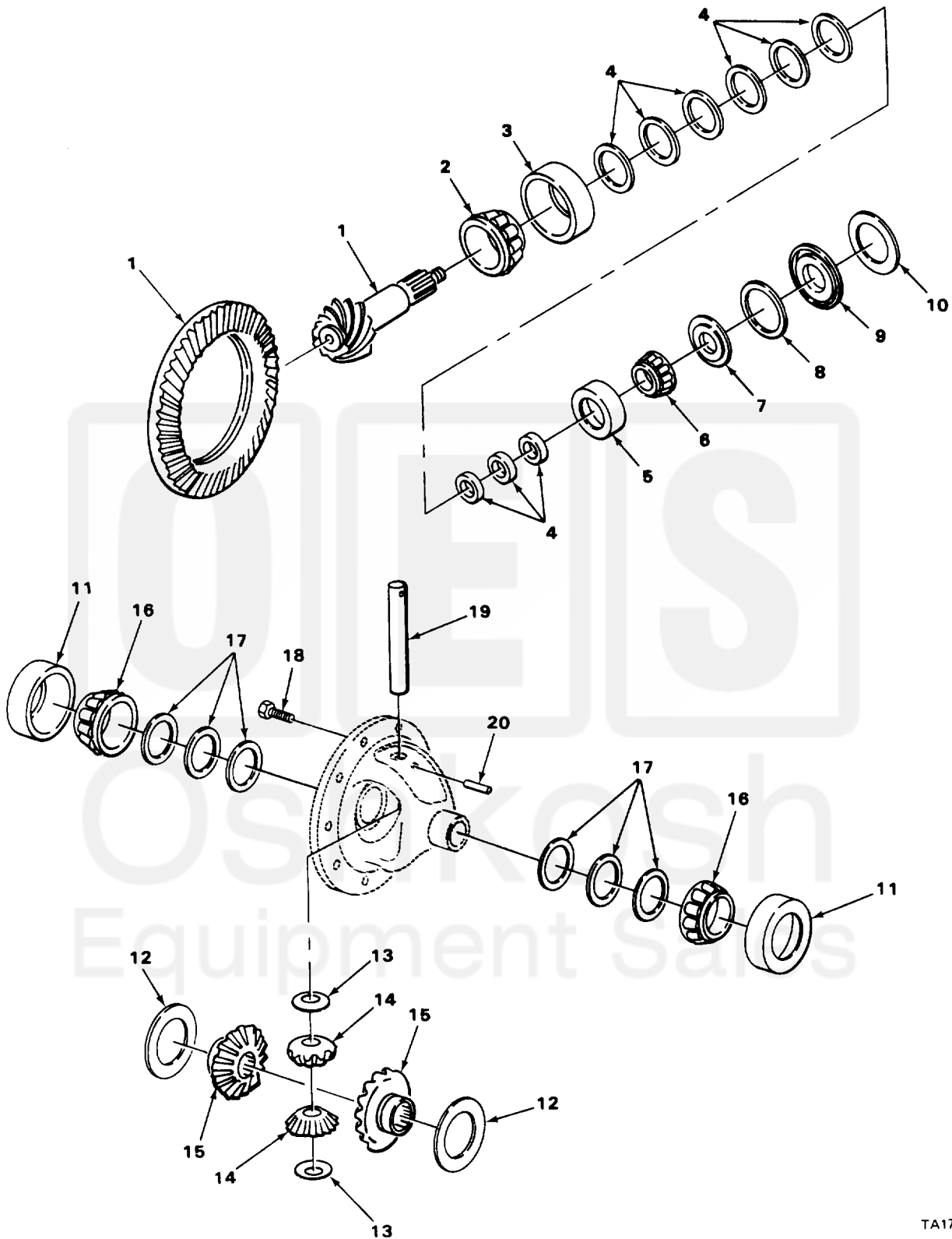


FIGURE 51. DIFFERENTIAL CASE AND DRIVE GEAR PINION KITS.

TA177210

Current part is item (11) on diagram. Available at www.oshkoshequipment.com

SECTION (1)	II (2)		TM9-2320-266-24P (4)	(5)	(6)
ITEM NO	SMR CODE	CAGEC	PART NUMBER	DESCRIPTION AND USABLE ON CODES (UOC)	QTY
10	PAFZZ	95019	14223	U95 SEAL,PLAIN ENCASED PINION BEARING PART OF KIT P/N 3893986 UOC:T06,T07,T08,T09,T10,T12,T17,T19, U95	1
11	PAHZZ	12204	1793510	CUP,TAPERED ROLLER BEARING PART OF KIT P/N 3893983 UOC:T06,T07,T08,T09,T10,T12,T17,T19, U95	2
12	KFHZZ	86403	3491680	WASHER THRUST, SIDE GEAR PART OF KIT P/N 3893983 UOC:T06,T07,T08,T09,T10,T12,T17,T19, U95	2
13	PAHZZ	12204	1791561	WASHER,SPRING TENS I THRUST, DIFFERENTIAL PINION GEAR PART OF KIT P/N 3893983 UOC:T06,T07,T08,T09,T10,T12,T17,T19, U95	2
14	PAHZZ	86403	1791560	GEAR,SPUR,DIFFERNTI PART OF KIT P/N 3893983 UOC:T06,T07,T08,T09,T10,T12,T17,T19, U95	2
15	PAHZZ	86403	2954032	GEAR,BEVEL SIDE PART OF KIT P/N 3893983 UOC:T06,T07,T08,T09,T10,T12,T17,T19, U95	2
16	PAHZZ	12204	1790523	CONE AND ROLLERS,TA DIFFERENTIAL BEARING PART OF KIT P/N 3893983 UOC:T06,T07,T08,T09,T10,T12,T17,T19, U95	2
17	PAHZZ	12204	1791568	SHIM DIFFERENTIAL BEARING,.003 IN. THK PART OF KIT P/N 3893983 UOC:T06,T07,T08,T09,T10,T12,T17,T19, U95	1
17	PAHZZ	12204	1791569	SHIM DIFFERENTIAL BEARING,.005 IN. THK PART OF KIT P/N 3893983 UOC:T06,T07,T08,T09,T10,T12,T17,T19, U95	1
18	PAHZZ	86403	1791564	SCREW DRIVE GEAR PART OF KIT P/N 3893986 PART OF KIT P/N 3893983 UOC:T06,T07,T08,T09,T10,T12,T17,T19, U95	10
19	PAHZZ	86403	1935851	SHAFT,AXLE,REAR PINION PART OF KIT P/N 3893983 UOC:T06,T07,T08,T09,T10,T12,T17,T19, U95	1
20	XDHZZ	86403	1791563	PIN,SHAFT LOCK PINION PART OF KIT P/N 3893983 UOC:T06,T07,T08,T09,T10,T12,T17,T19, U95	1

END OF FIGURE

Current part is item (11) on diagram. Available at www.oshkoshequipment.com